

moor<sup>®</sup>  
Spa  
pure . skin

## Moor Spa Skin Care

The signature ingredient in all **Moor Spa** Skin-Care products is the **Austrian Deep Moor**. Created by nature over 10,000 years ago, this nutrient-rich complex is derived from a multitude of herbs, plants and flowers and is revered for its wonderful properties by clinics and spas around the world.



Every **Moor Spa** product contains the moor's wonderful purifying, revitalizing and nutritious properties captured in our unique moor extract. The moor extract is created by a filtration process which takes 6 weeks to complete. In this process the water-soluble nutrients in the moor are gradually filtered out of the solid substance into a rich, black liquid. The moor extract is then blended with a range of 100% natural-source ingredients at our manufacturing facility in Vancouver to create the complete Moor Spa product line. No artificial preservatives, colours or fragrances are included, nor any petroleum derived ingredients.

### EXCLUDED INGREDIENTS

Here is a list of the key ingredients that we recommend avoiding and that are excluded from all **Moor Spa** products:

- **Mineral Oil / Petrolatum:** forms a non-penetrating film over the skin preventing normal skin metabolism.
- **Propylene Glycol:** Surfactant / Solvent used in most skin-care products. Also used in antifreeze.
- **Polyethylene Glycol (PEG):** Solvent / Thickener - also used in caustic spray-on oven cleaners.
- **Parabens (Methyl, Propyl, Ethyl, Butyl):** Toxic chemicals used as preservatives (*sometimes labelled as Germaben*).
- **DMDM Hydantoin, Diazolidinyl Urea and Imidazolidinyl Urea:** Preservatives that release formaldehyde (*sometime labelled as Germall Plus*)
- **Synthetic Fragrance (Parfum):** May contain up to 4000 synthetic chemicals, many of which may be allergens.
- **Synthetic Colours (FD&C number)**
- **Sodium Lauryl (or Laureth) Sulphate:** Derived from Coconut oil - may impair hair growth and damage proteins.

### INCLUDED INGREDIENTS

These are some of the naturally derived ingredients that are incorporated into **Moor Spa** products:

- **Unadulterated Herbal Extracts:** created fresh from dry herbs using our own in-house extraction equipment
- **Pure Essential Oil Fragrances**
- **Vegetable and Plant Oils:** Cold pressed oils including rosehip, almond, sunflower, macadamia, hemp seed & jojoba
- **Natural Source Vitamins:** Vitamins A, C and E
- **Natural Preservative:** Based on Ionic Silver which kills bacteria, yeast and mould very effectively
- **Plant Based Emulsifiers & Surfactants**
- **Active Plant Based Cosmeceuticals:** Papain and bromelain enzymes, plant acids, peptides, phyto-collagen, and many more.
- **Vegetable Glycerin:** A plant derived humectant used to replace Propylene Glycol
- **Moor peat, Algae, Seaweed:** Many products include the Moor peat. Others include seaweed extract and algae

## The Moor Spa 'Naturalness' Guarantee

Since skin-care product manufacturers can call a product 'Natural' or 'Organic' even if many of the ingredients are actually synthetic, we tried to find a way to differentiate our products because they are 100% Natural Source. Every Moor Spa Skin Care product includes a personal guarantee signed by the company president which assures that the product is truly 100% Natural Source. The reverse side then lists all of the ingredients and the natural sources from which they are derived.



Lucia's  
Aesthetics & Day Spa  
705.474.0523  
www.luciasdayspa.com



Lucia's  
Aesthetics & Day Spa

705.474.0523  
www.luciasdayspa.com

moor  
Spa<sup>®</sup>  
pure . skin

## Moor Spa Skin Care

### Masks

**Facial Mask** *For All Skin Types* Our famous Facial Mask consists solely of the vital Moor peat which deeply nourishes and replenishes, helping the skin to look and feel incredibly soft, firm and radiant.

**Cream Mask** *For Dry / Sensitive Skin* An alternative to the pure Moor mask - this is a combination of Moor peat and a soothing cream base comprising Avocado Oil, Allantoin and Lavender essential oil.

**Vitamin C Mask** *For Mature / Environmentally Damaged Skin* An intensive repair face mask specially created to revitalize and rejuvenate the skin. Combines a highly bio-available form of Vitamin C with Papain & Bromelain enzymes to exfoliate and stimulate cell renewal.

**Algamoor Mask** *For Oily / Acneic Skin* An organic marine mud from Germany comprising 12 varieties of algae that targets skin lacking in hydration and minerals, and in need of purification.

**Peel Off Mask** *For All Skin Types - Professional Use Only* Specially formulated to set into a one-piece removable mask that seals in moisture. The combination of Clay and Moor Peat is wonderful for skin purification and rejuvenation. Particularly recommended after application of any of the 4 Moor Spa Serums.

**Soothing Gel Mask** *For All Skin Types* Formulated with deeply soothing extracts of Cucumber, Aloe Vera, Arnica and Boswellia this unique gel mask soothes irritation, redness and puffiness. Hyaluronic acid and silk protein provide intense hydration and a renewed smooth complexion. Suitable for all skin types, but especially effective after any intensive skin-care treatment.



### Cleansers

**Cleansing Bar** *For All Skin Types* The rich creamy lather of this 100% natural, hand-made cleansing bar deeply penetrates and purifies the skin - enhancing softness and smoothness. Unlike most soaps, it will not damage the skin's natural acid mantle.

**Cleansing Gel** *For Normal / Oily Skin* A gentle, low-sudsing liquid cleanser, moor-based with essential oils of Tea-Tree, Lavender, Lemongrass and Ylang-Ylang. Contains no harsh surfactants.

**Cleansing Milk** *For Dry / Sensitive Skin* This emulsifying cleanser is a blend of gentle cleansing agents and soothing botanical extracts including Chamomile, Lavender and Arnica. Excellent for removing most make-up.

**Salicylic Cleanser** *For Oily / Acneic Skin* A mild-lathering cleanser - lightly exfoliating, that helps minimize uneven skin tone, dark spots, and post blemish discoloration. Excellent for those who prefer a therapeutic but mild cleanser.

**Eye Make-Up Remover** *For All Skin Types* Lifts even the toughest waterproof mascara; leaving no oily residue. \*Note: This product requires a solvent to remove heavy eye-make-up and is therefore NOT 100% Natural Source



### Toners

**Herbal Toner** *For All Skin Types* This beautifully scented toner enhances skin tone and texture, and restores natural skin balance. Combines Moor water and moisture-trapping Sodium PCA with Lavender, Cedarwood and Tea-Tree essential oils.



**Glycolic Toner** *For Oily / Acneic Skin* Highly effective at diminishing excess oil - this toner uses ultra pure grade Glycolic Acid to help refresh, clarify, tone and soften the skin. Also includes the astringent properties of witch hazel extract.

**Hydrating Toner** *For Dry / Dehydrated Skin* This cooling alcohol-free toner contains hydrating and softening botanical extracts that "plump" thirsty skin. Use regularly to retain a healthy glow. Can also be used to set make-up.



GUARANTEED  
100% NATURAL SOURCE  
Skin Care Body Care Wellness

Lucia's  
Aesthetics & Day Spa

705.474.0523  
www.luciasdayspa.com

# Moor Spa Skin Care

## Exfoliants

**Facial Polish** *For All Skin Types* This gentle, gel-based polish removes dead skin cells with the abrasive action of fine Jojoba beads - thereby promoting cell renewal. Extracts of Calendula, Lavender and Chamomile soothe and soften.

**15% Glycolic Lotion** *For All Skin Types* Removes the dead cells which result from rough, dry or sun-damaged skin using the 'peeling' action of Glycolic Acid. Helps to diminish the appearance of fine lines and rejuvenate aging skin.

**Pumpkin Peel** *For All Skin Types Except Sensitive* Potent enzyme peel treatment that exfoliates & smoothes skin for a renewed texture and appearance. Combines Pumpkin pulp with Papain & Bromelain enzymes and Glycolic Acid. Creates an active, tingling sensation.



## Moisturizers

**Hydrating Cream** *For Normal / Sensitive Skin* This exquisite moisturizer combines Vitamins A and E, Antioxidants, Humectants and Moor water with Thyme, Rosemary and Goldenseal extracts to deeply hydrate, protect and revitalize the skin.

**Replenishing Cream** *For Dry / Dehydrated Skin* A richer skin cream for dehydrated, aging or dry skin. With Vitamins A, C and E; Wild Yam, Sage, Chamomile & Neem extracts, Glycolic Acid & an exquisite blend of essential oils including Helichrysum, Petigrain and Palmarosa.

**Clarifying Cream** *For Oily / Combination Skin* A super-light cream-gel with Vitamins A & E; Cucumber, Marshmallow & St Johns Wort; and Asafetida extract which helps to restore a bright and clear skin-tone.

**Renewal Cream** *For All Skin Types* Contains the powerful antioxidant Alpha Lipoic Acid and DMAE which is known to reduce fine lines and wrinkles. Fragranced with Basil and Palmarosa, this cream may help to reduce the impact of aging on the skin.

**Mattifying Cream** *For Oily / Acneic Skin* Contains Glycolic Acid, Tea-Tree and oil-controlling ingredients that help to regulate sebum production. Creates a smooth, poreless, natural matte finish so that skin shows "no shine" all day.

**95% Organic Moisturizer** *For All Skin Types* A wonderful new moisturizer containing 95% organic ingredients. This is a light yet very rich moisturizer suitable for all skin types but especially suited to mature skin. Combines organic shea butter and aloe vera with organic rosehip, hemp, soybean, macadamia and Jojoba oils.



## Eye Care

**Eye Zone Cream** *For All Skin Types* This rich protective formula contains GLA-rich Borage Oil and Shea Butter which aids in cell renewal. Vitamins A & E, Azulene and Linden Blossom complete this wonderful formula.

**Eye Zone Balm** *For Dry / Puffy Skin* A corrective, age-defying balm that helps to contour the eye area, reduce puffiness and protect against free radical damage.

**Eye Zone Gel** *For Sensitive / Irritated Skin* A revitalizing fluid formula that aids in soothing, and alleviates redness and signs of fatigue with a unique combination of preventive botanicals.

**Eye Lotion** *For All Skin Types* Contains Moor & Witch Hazel extract. For a look-younger spa treatment in seconds pour 10 drops onto a cotton pad and apply around the eyes.

## Serums

**Renewal Serum** *Skin Rejuvenation* This potent anti-aging serum combines the revitalizing effects of Moor extract and plant-derived Collagen; the anti-oxidant properties of Vitamin C; and the deeply hydrating action of Hyaluronic Acid.

**Radiance Serum** *Skin Brightening* The perfect daily solution for brightening the skin and helping to reduce acne scars and hyper-pigmentation. This light but powerful serum improves skin's vitality, lifts and elevates to an all-over glowing appearance.

moor  
Spa<sup>®</sup>  
pure . skin



Lucia's  
Aesthetics & Day Spa

705.474.0523

www.luciasdayspa.com

# Moor Spa Skin Care

## Serums ...cont'd

**Rescue Serum** *Skin Repair* Used to help repair tired, overworked or damaged skin. Copper Peptide promotes skin repair and Sodium PCA restores and hydrates the barrier layer to create a balanced moisture level in the skin.

**Plumping Serum** *Skin Smoothing* A highly advanced smoothing treatment using Palmitoyl Tripeptide to help significantly decrease the appearance of facial lines and wrinkles.

## Specialty Products

**Skin Balm** *For Damaged / Irritated Skin* A multi-purpose skin-repair salve combining both Moor peat and water with extracts of Olibanum and Goldenseal in a rich, soothing base of Avocado Oil, Cocoa Butter and Shea Butter.

**Facial Soother** *For All Skin Types* Contains extracts of Cucumber, Aloe Vera, and Chamomile to soothe, heal and hydrate sun-burnt, irritated or damaged skin. White Tea extract supports immune function of skin cells and protects against sun damage.

**Hand Cream** *For All Skin Types* The fresh scent of citrus is blended with hydrating emollients such as Shea Butter, and Vitamins A & E to smooth and soften the hands and provide

**Blemish Gel** *For Acneic Skin* This acne spot treatment gel combines the soothing effects of Slippery Elm Bark extract with the anti-bacterial effect of Ionic Silver. The gel may be applied underneath a moisturizer.

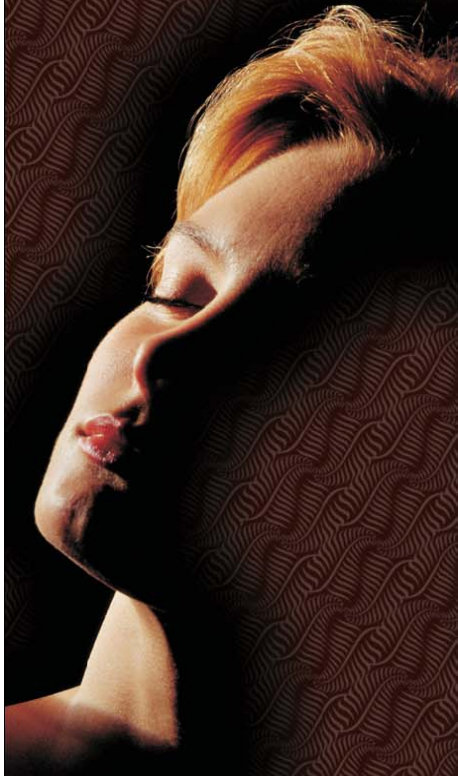
**Blemish Shield** *For Blemished Skin* A specialty skin care product which helps to both conceal and alleviate blemished skin with enlarged pores. Moor extract and Shea Butter soothe redness and irritation, Zinc Oxide provides UV protection, and Ionic silver creates an anti-bacterial effect. The product is pigmented to provide cover over blemishes and also works well as a make-up base.

**Protection Cream** *For All Skin Types* This all natural protection cream contains a high concentration of micronized Zinc Oxide which forms a protective, transparent coat on the skin. Zinc Oxide is both a UVA and UVB reflector. Shea and Cocoa Butter simultaneously moisturize and nourish the skin.

## Product Selection Chart

Skin Type or Application	Cleanser	Toner	Exfoliant	Serum	Mask	Moisturizer	Eye Care
Normal	Cleansing Gel Eye Make-Up Remover*	Herbal Toner	Facial Polish	Radlance Serum	Facial Mask (pre-apply Complete Oil)	Moisture Cream Normal / Sensitive	Eye Zone Cream Eye Lotion
Oily	Salicylic Cleanser Eye Make-Up Remover*	Glycolic Toner	15% Glycolic Lotion	Rescue Serum	Algamoor Mask	Moisture Cream Oily / Combination or Mattifying Cream	Eye Zone Gel Eye Lotion
Dry	Cleansing Milk Eye Make-Up Remover*	Hydrating Toner	Pumpkin Peel	Rescue Serum or Radlance Serum	Cream Mask	Moisture Cream Dry / Devitalized	Eye Zone Balm Eye Lotion
Sensitive	Cleansing Milk Eye Make-Up Remover*	Herbal Toner	Facial Polish	Rescue Serum	Cream Mask or Peel Off Mask	Moisture Cream Normal / Sensitive	Eye Zone Cream Eye Lotion
Mature / Anti-Aging	Cleansing Milk Eye Make-Up Remover*	Hydrating Toner	Pumpkin Peel	Renewal Serum or Plumping Serum	Vitamin C Mask	Renewal Cream	Eye Zone Balm Eye Lotion
Environmentally Damaged Skin	Cleansing Milk Eye Make-Up Remover*	Hydrating Toner	Facial Polish	Rescue Serum	Peel Off Mask w/ Serum	Skin Balm + Protection Cream	Eye Zone Balm Eye Lotion
Acne	Salicylic Cleanser Eye Make-Up Remover*	Glycolic Toner	Pumpkin Peel or Facial Polish	Radlance Serum or Rescue Serum	Algamoor Mask	Blemish Gel + Mattifying Cream Blemish Shield	Eye Zone Gel Eye Lotion
Psoriasis / Eczema	Cleansing Milk Eye Make-Up Remover*	Hydrating Toner	Pumpkin Peel	Rescue Serum	Facial Mask (pre-apply Complete Oil)	Skin Balm	Eye Zone Cream Eye Lotion
Brightening / Whitening	Salicylic Cleanser Eye Make-Up Remover*	Glycolic Toner	15% Glycolic Lotion	Radlance Serum	Vitamin C Mask	Renewal Cream or Moisture Cream For Skin Type	Eye Zone Cream Eye Lotion
Smoothing (Anti-Wrinkle)	Salicylic Cleanser Eye Make-Up Remover*	Glycolic Toner	Pumpkin Peel	Plumping Serum	Peel Off Mask w/ Serum	Renewal Cream	Eye Zone Balm Eye Lotion
After-Sun Care	Cleansing Milk Eye Make-Up Remover*	Hydrating Toner	n/a	Rescue Serum	Cream Mask	Facial Soother or Skin Balm + Protection Cream	Eye Zone Gel Eye Lotion

moor Spa<sup>®</sup>  
pure . skin



Lucia's  
Aesthetics & Day Spa

705.474.0523  
www.luciasdayspa.com